

JRCJames Ross Collection
WeAr the Future

James Ross Collection

SCHEMA TECNICA

JRCJames Ross Collection
WeAr the Future

Felpa Georgia Lady

**Felpa****80% cotone - 20% poliestere****in french terry**

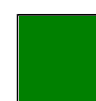
- Non felpata internamente
- Collo a lupetto
- Cerniere nastrate
- Zip lunga coperta
- Due tasche con zip
- Collo, polsini e fondo maglia in costina elasticizzata
- Nastro di rinforzo interno collo
- Cuciture ribattute
- Il colore Melange è 60% cotone 40% poliestere

S - M - L - XL**Colori e codici articolo:**

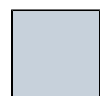
994940 NAVY



994941 BLACK



994942 GREEN



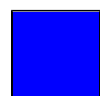
994943 MELANGE



994944 ORANGE



994945 RED



994946 ROYAL



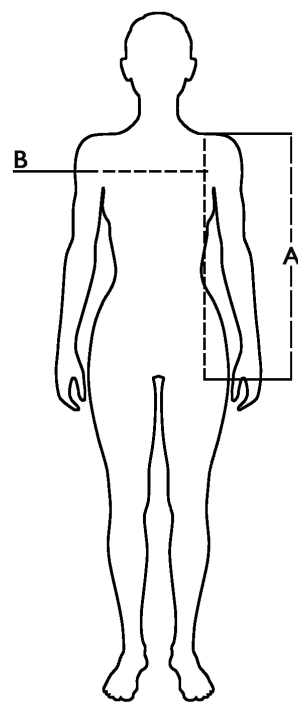
994947 WHITE






994948 GREY

Tabella misure

Sizes (+/- 5%)	A front length	B chest
S	62	46
M	64	48
L	66	50
XL	68	52

**Descrizione tecnica**

	Composizione / Fabric Composit	 g/m
Tessuto esterno/Shell	80% cotone - 20% poliestere Melange: 60% cot. - 40% pol.	260
Imballo/Packages	 20 pcs	
Istruzioni di Lavaggio / Care Label		

Rapporto di Prova

Effettuato da Ritex divisione Ecochem spa N. 22RT00563 del 21.03.22

Cat. DPI/PPE category I Norme **CE** livelli di protezione/EC standard e livelli di protezione EN ISO 13688:2013/A1:2021